

## Installing Microsoft SQL Server 2005 Express

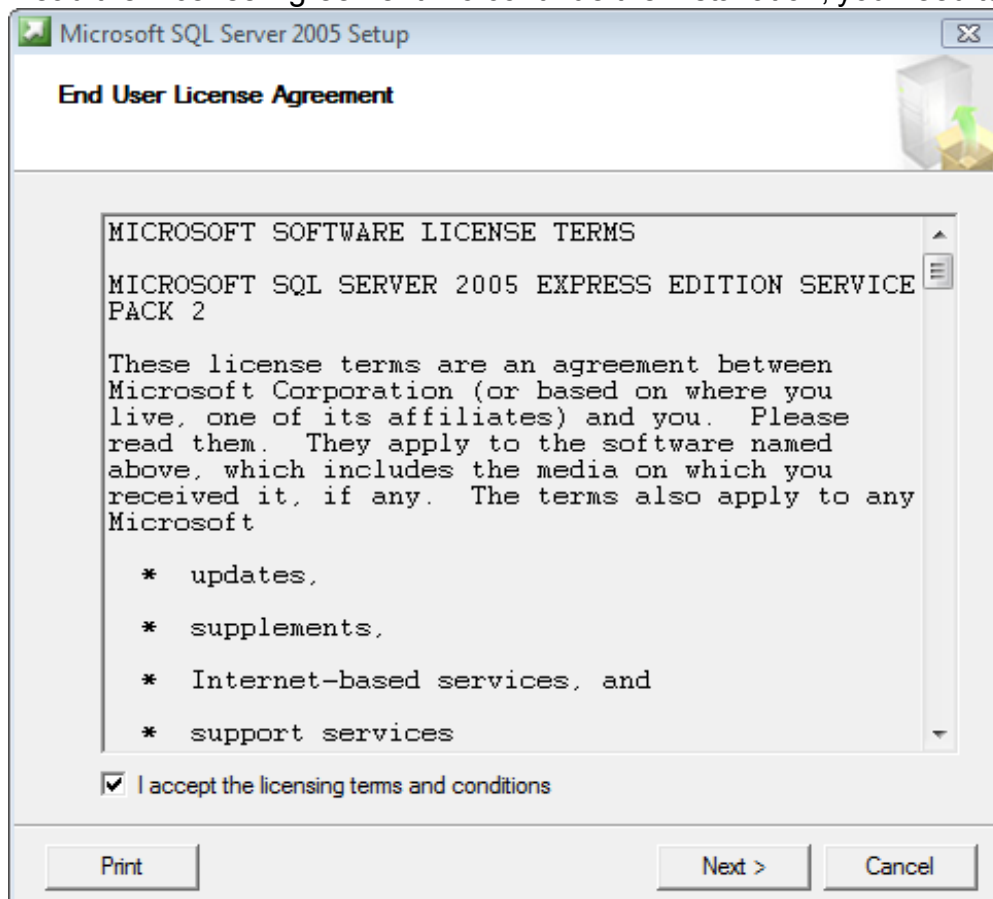
**Note:** TRBOnet RadioServer uses Microsoft SQL Server 2000, Microsoft SQL Server 2005, Microsoft SQL Server 2005 Express databases to store data.

You need to:

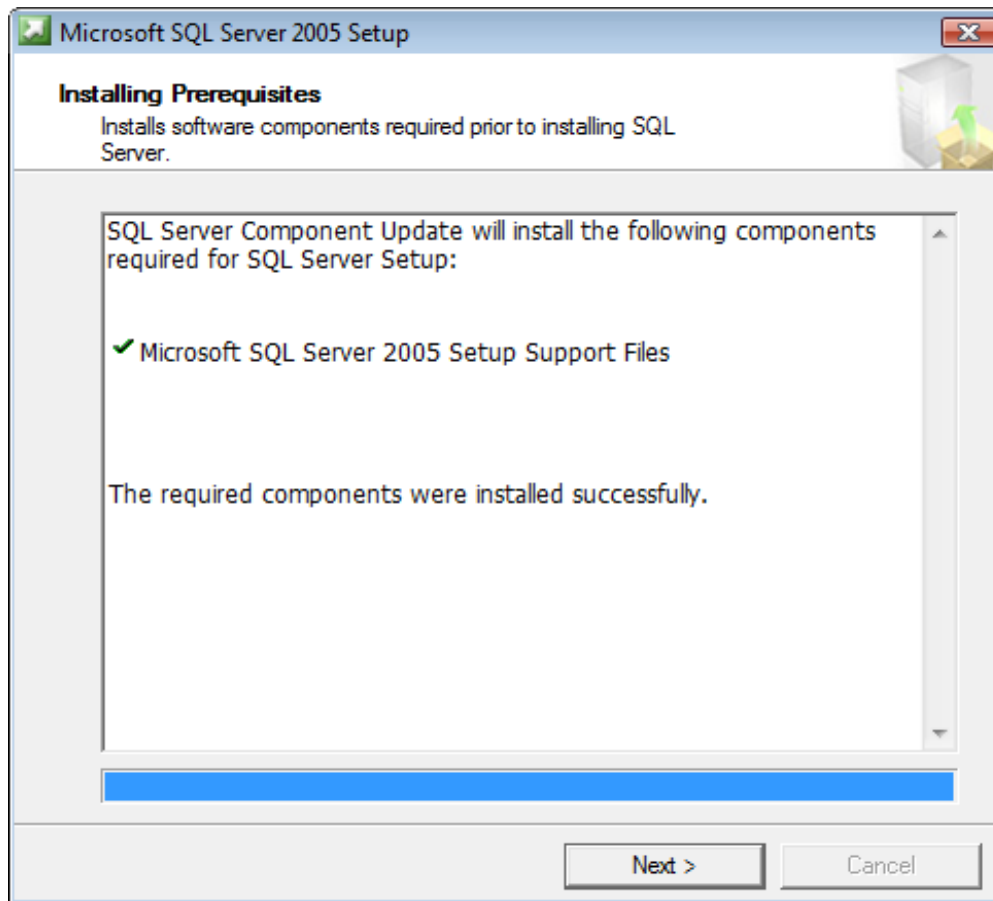
- [Install Microsoft SQL Server 2005 Express](#)
- [Install Microsoft SQL Server Management Studio Express](#)
- [Configure Microsoft SQL Server 2005 Express](#)

### To install Microsoft SQL Server 2005 Express

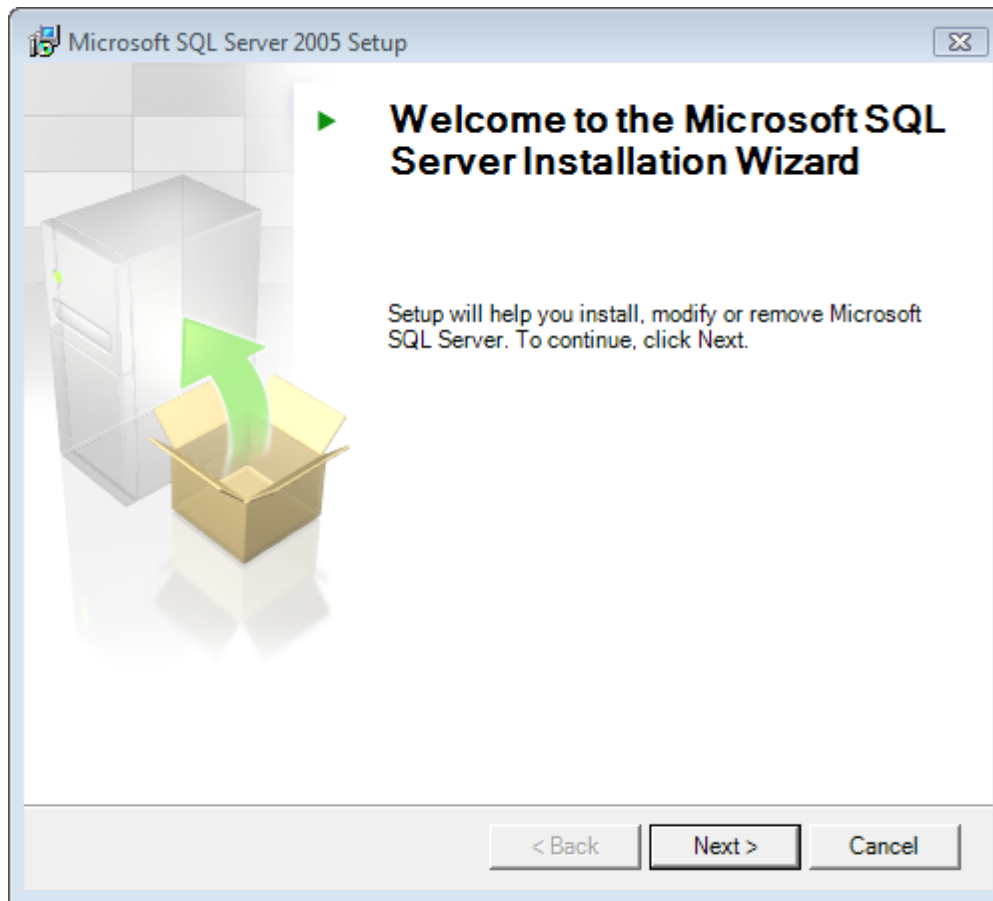
1. Go to the official Microsoft website:  
<http://www.microsoft.com/downloads/details.aspx?familyid=31711D5D-725C-4AFA-9D65-E4465CDFF1E7&displaylang=en>
2. From the list of available language, choose the language of the necessary download.
3. Download the **SQLEXPR.EXE**.
4. After download completes, run the package.
5. Read the License Agreement. To continue the installation, you need to accept it.



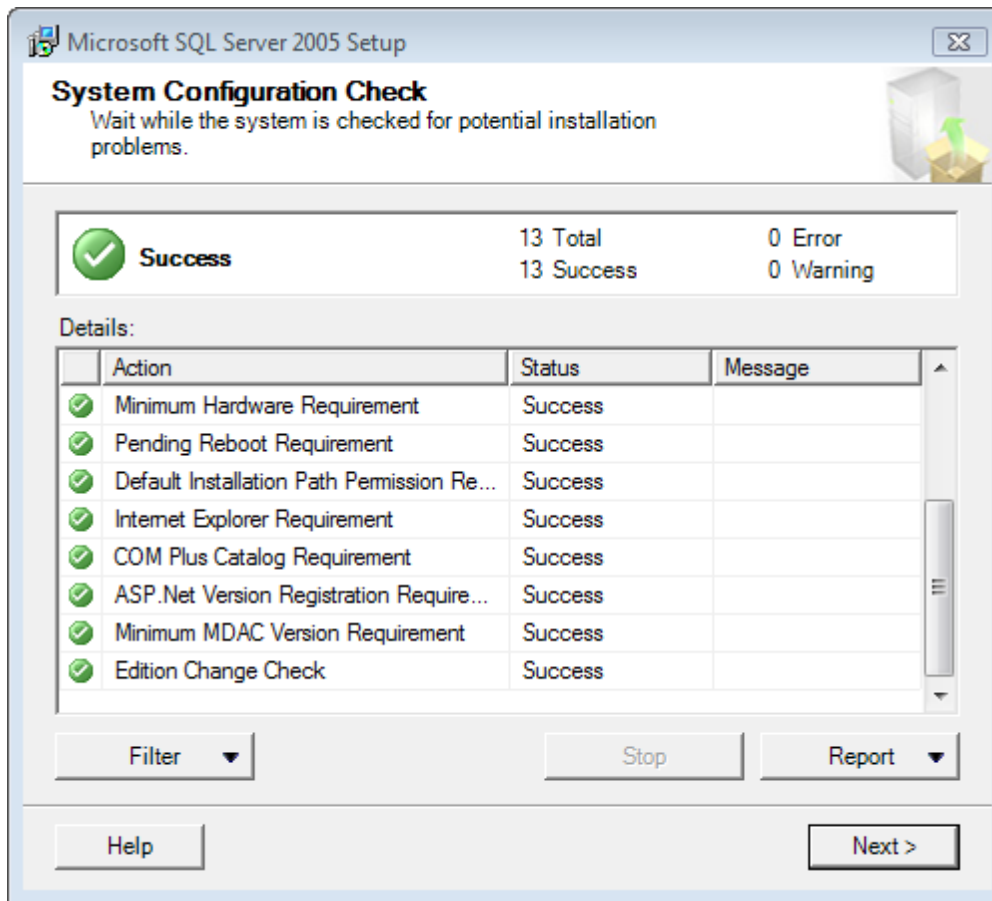
6. Click **Next**.
7. On completion of prerequisites' installation, click **Next**.



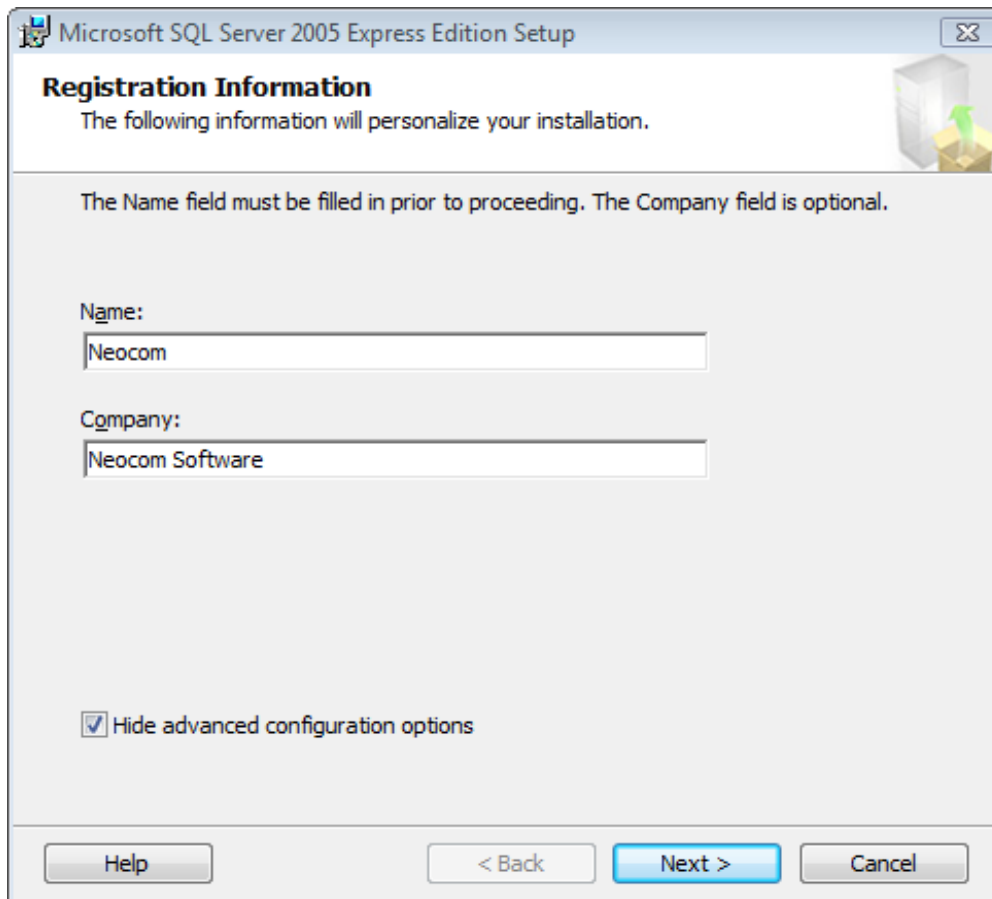
8. The installation wizard launches installation of Microsoft SQL Server Express. Click **Next**.



9. The installation wizard verifies that your computer meets system requirements of MS SQL Server Express. Please, read the test results carefully and eliminate errors (if any). If there are no errors, click **Next**.



10. The installation wizard installs the database server on your computer. Enter the name of database server owner and company. You can also set advanced configuration options, or skip them. To set the options, clear the **Hide advanced configuration options** checkbox. After you complete your selection, click **Next**.



The screenshot shows the 'Registration Information' window of the Microsoft SQL Server 2005 Express Edition Setup. The window title is 'Microsoft SQL Server 2005 Express Edition Setup'. The main heading is 'Registration Information' with a subtext: 'The following information will personalize your installation.' Below this, a note states: 'The Name field must be filled in prior to proceeding. The Company field is optional.' There are two text input fields: 'Name:' with the value 'Neocom' and 'Company:' with the value 'Neocom Software'. At the bottom left, there is a checked checkbox labeled 'Hide advanced configuration options'. At the bottom right, there are four buttons: 'Help', '< Back', 'Next >' (highlighted in blue), and 'Cancel'.

Microsoft SQL Server 2005 Express Edition Setup

**Registration Information**  
The following information will personalize your installation.

The Name field must be filled in prior to proceeding. The Company field is optional.

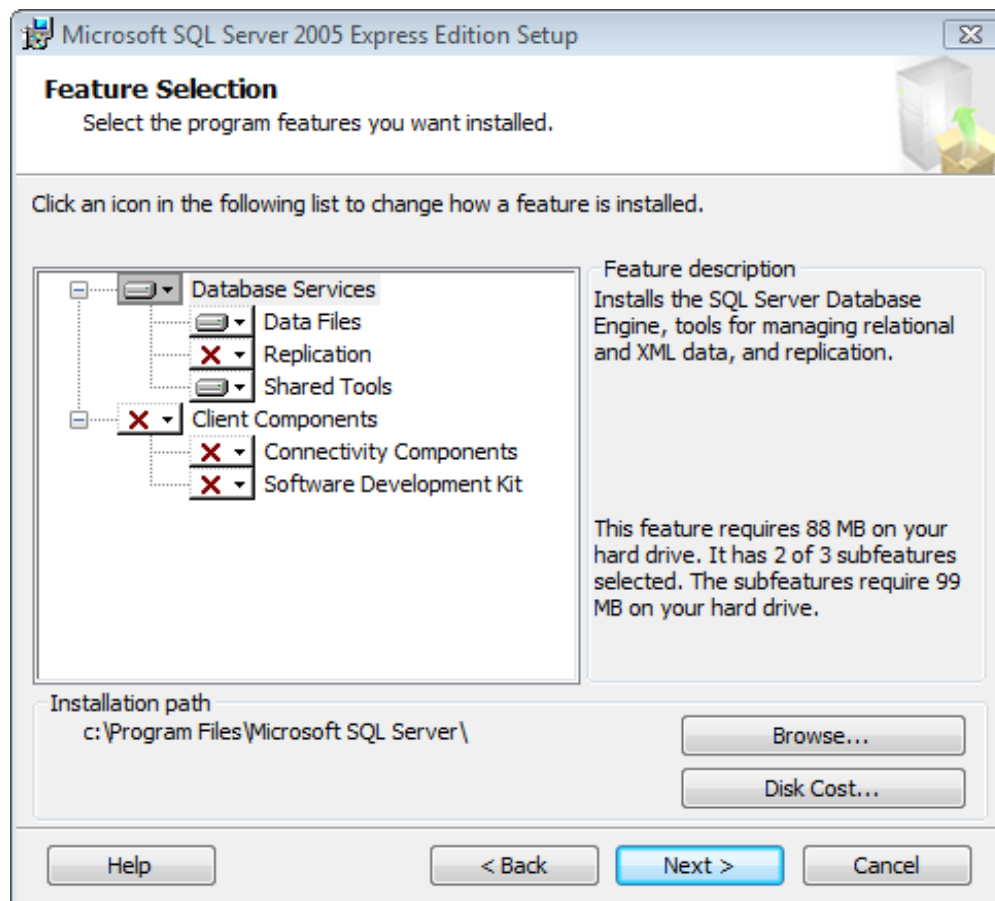
Name:  
Neocom

Company:  
Neocom Software

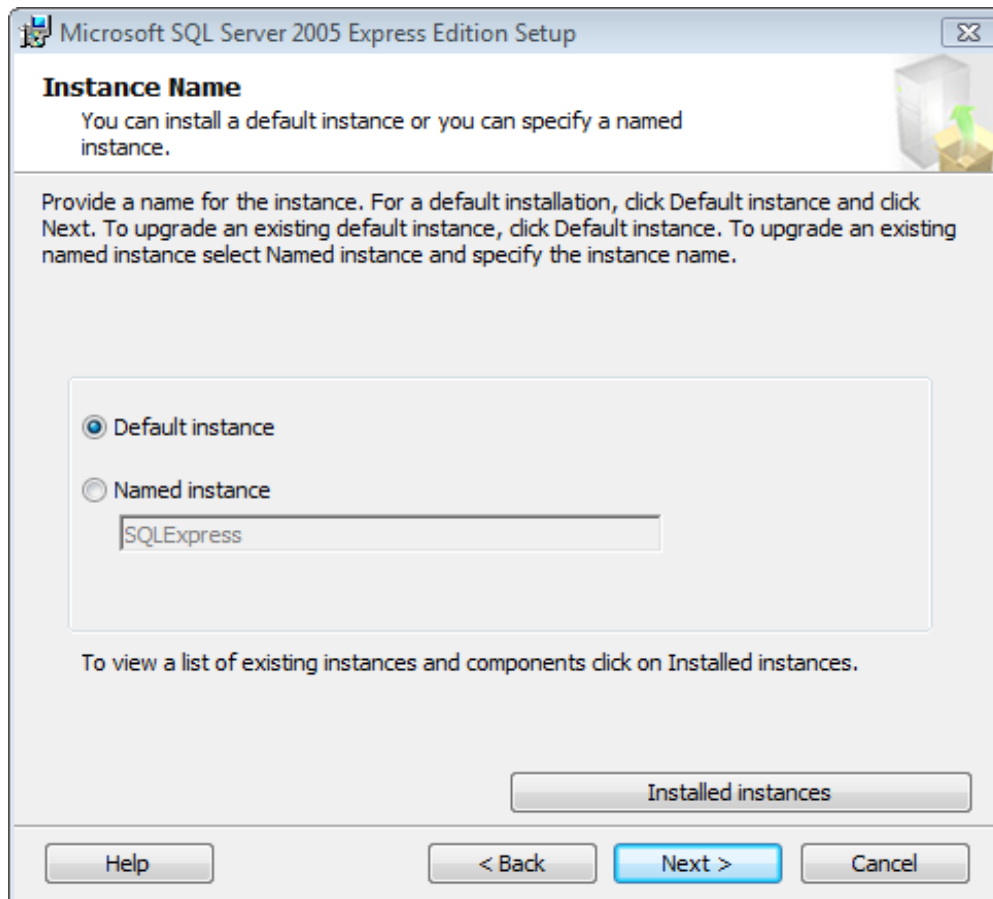
☒ Hide advanced configuration options

Help < Back Next > Cancel

11. Select the components to install on your computer. Please, leave the default components unchanged. If necessary, change the installation path. After you complete your selection, click **Next**.

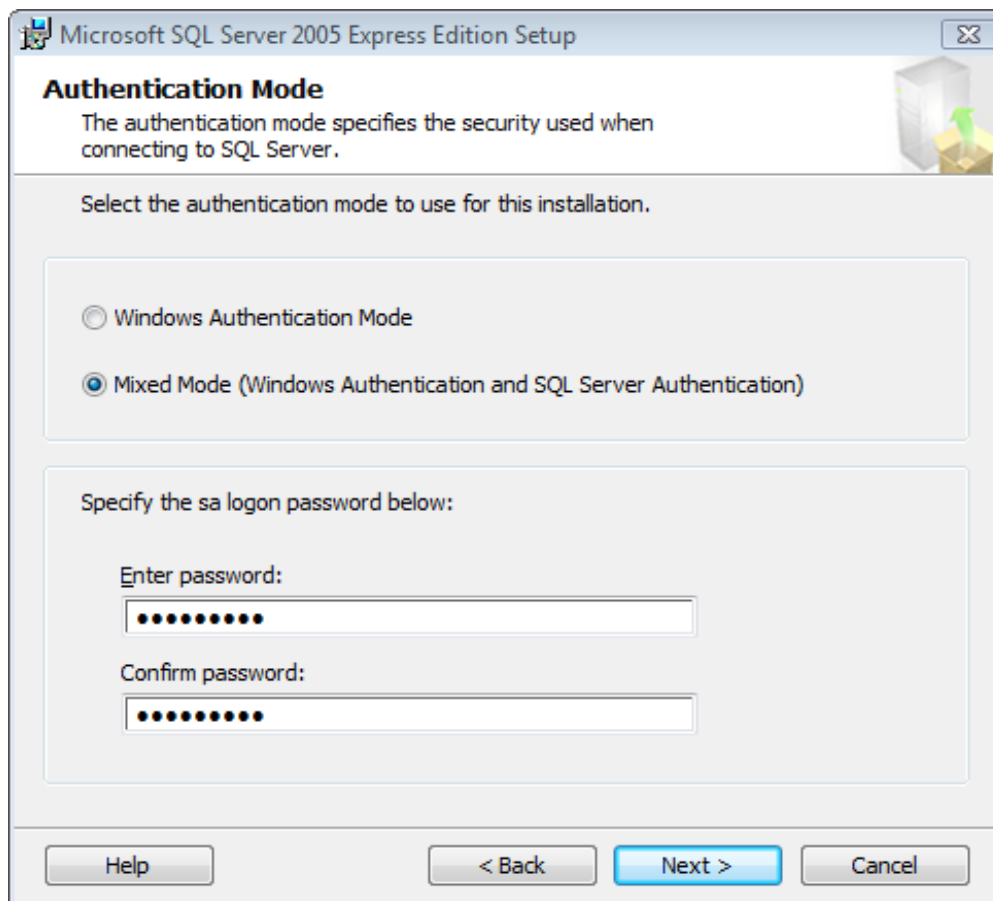


12. You can install a default instance or specify a named instance.



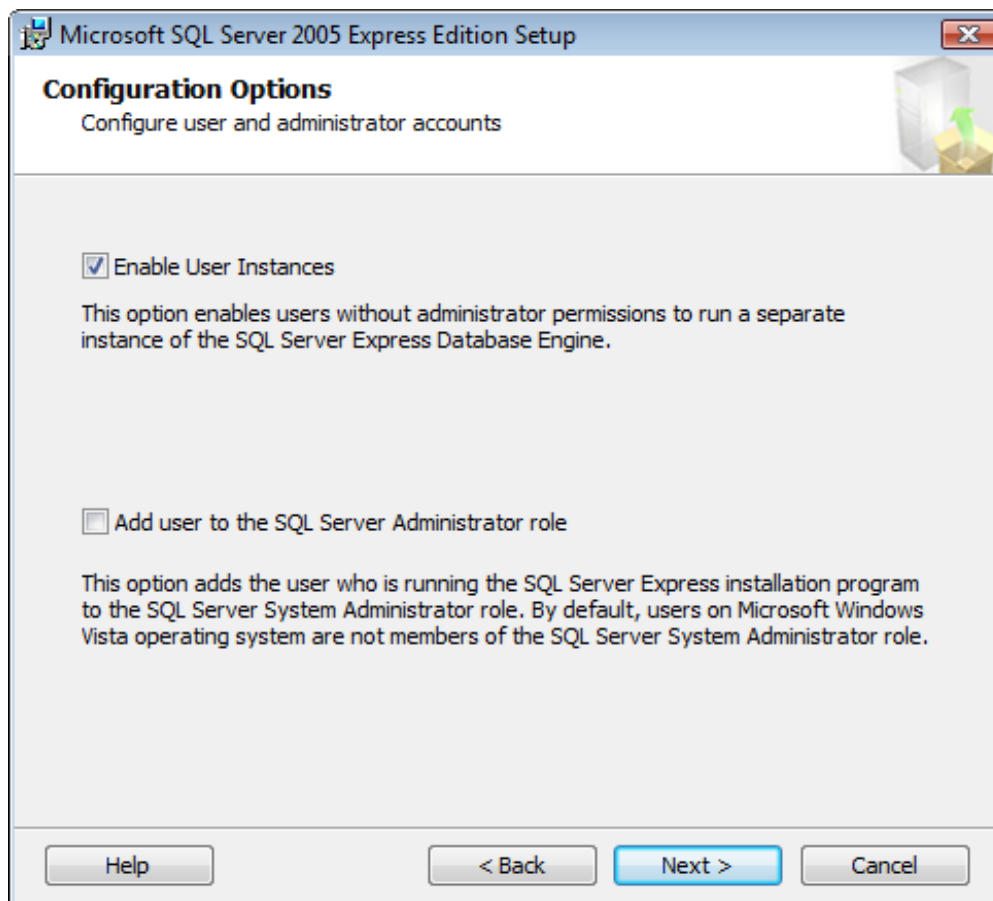
13. Select authentication mode to use at the database server. We recommend using **Mixed mode** since it is more flexible. Enter the password for the **sa** user.

**NOTE:** You should always use strong passwords for administrative accounts.

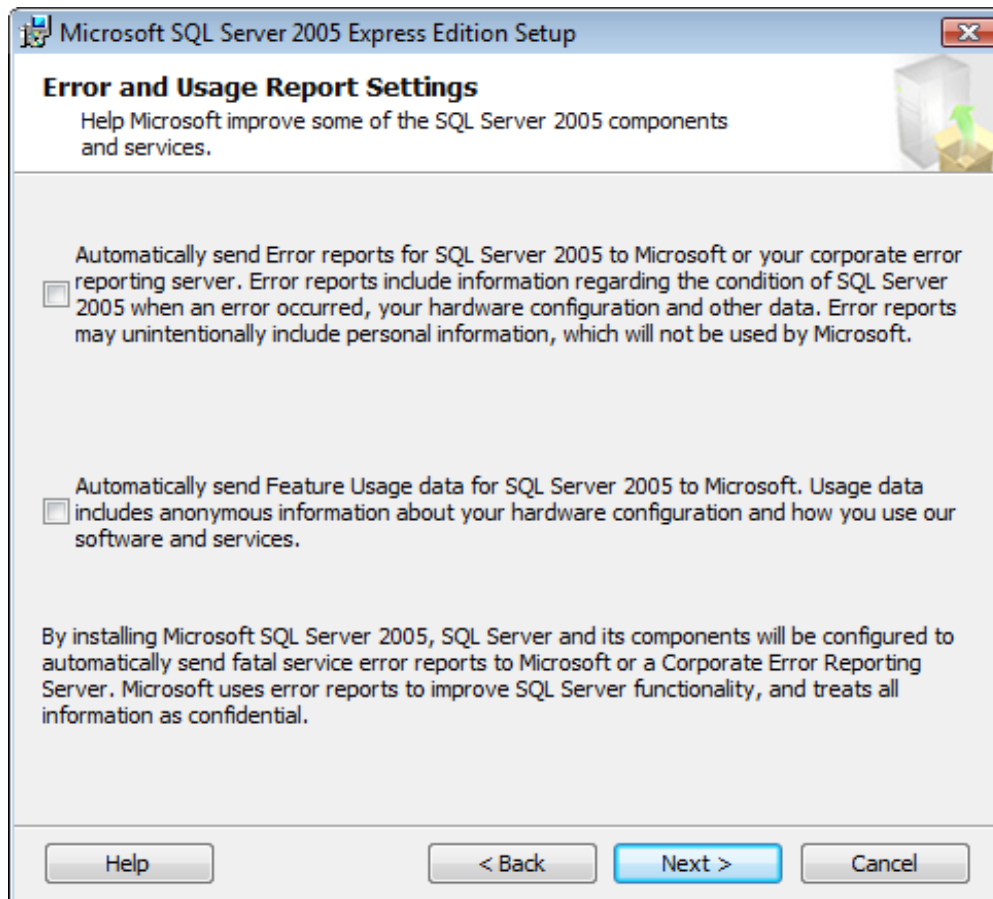


14. After completing your selection? click **Next**. On the next step, the installation wizard offers you to configure additional settings of database server. Please, use the default values and click **Next**.

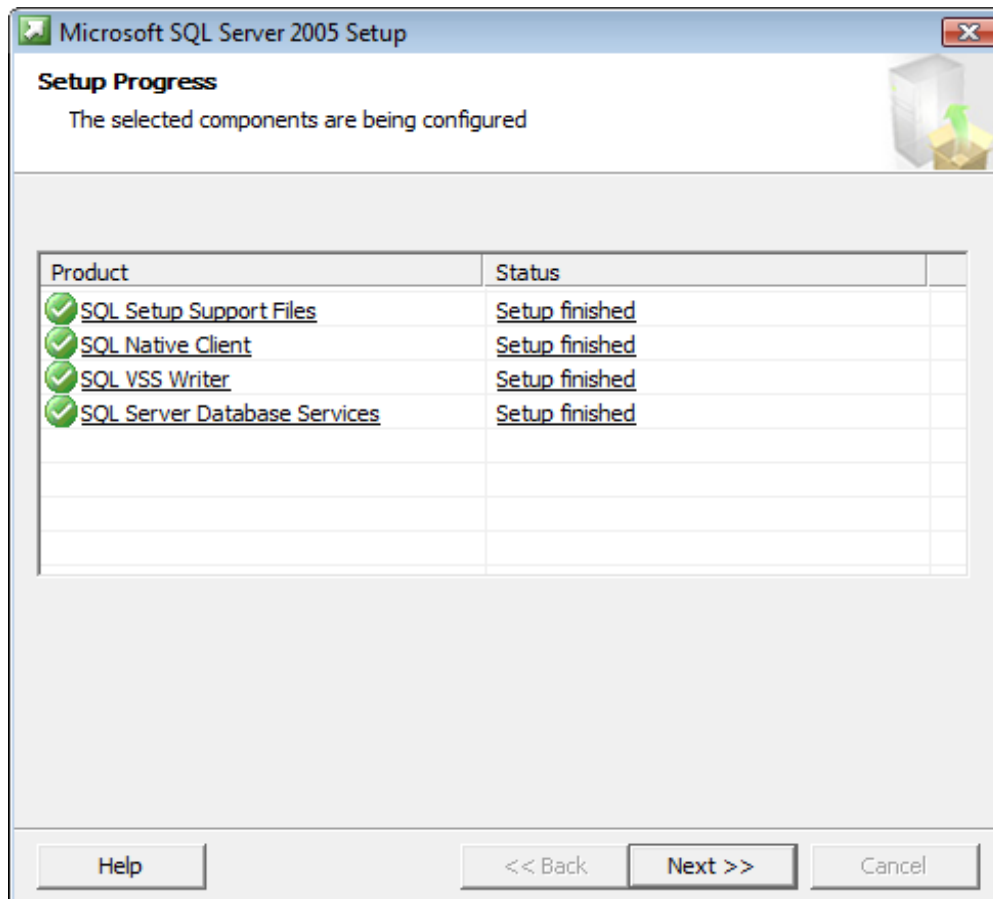




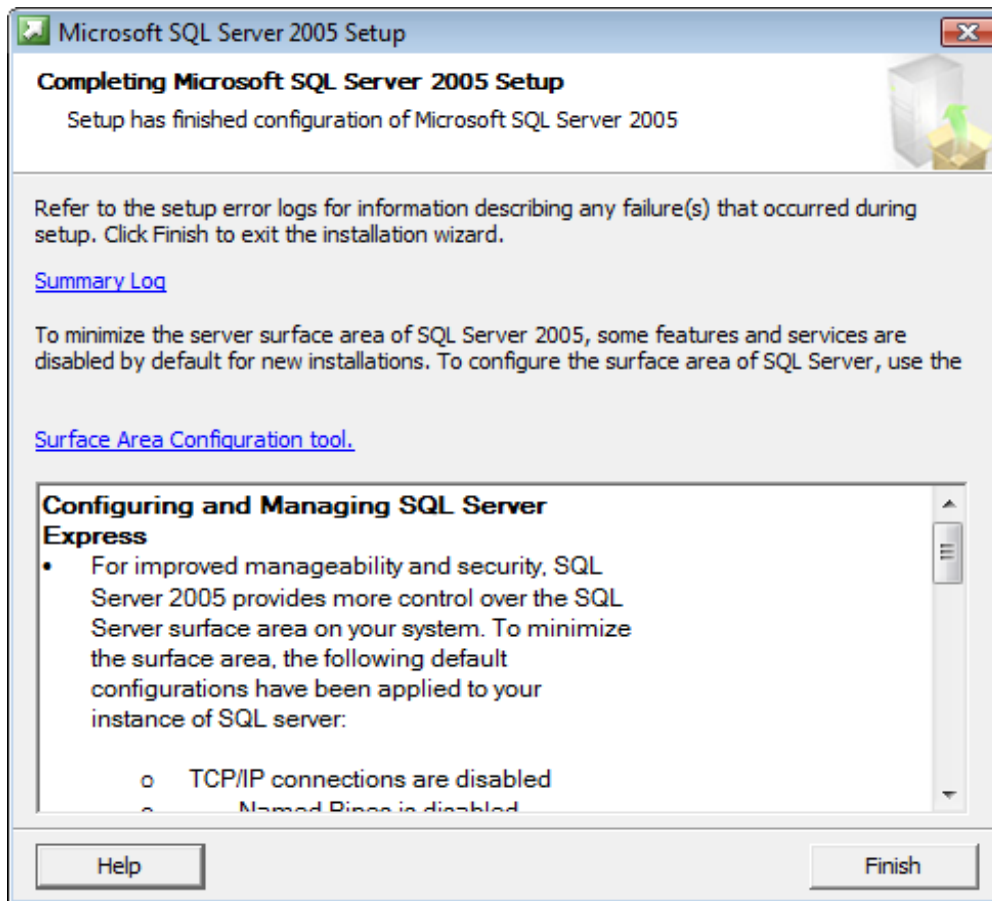
15. Then the installation wizard offers you to configure the error reporting tool. Please, use the default values and click **Next**.



16. Click **Install** to start the installation process. The installation wizard displays installation progress. Please, check that there are no errors during installation.



17. Click **Next**, then click **Finish** to complete the installation.



## To install Microsoft SQL Server Management Studio Express

1. Go to the official Microsoft website:  
<http://www.microsoft.com/downloads/details.aspx?FamilyId=6053c6f8-82c8-479c-b25b-9aca13141c9e&displaylang=en>
2. From the list of available language, choose the language of the necessary download.
3. Download **SQLServer2005\_SSMSEE.msi**.
4. After download completes, run the package and follow the prompts to complete the installation.

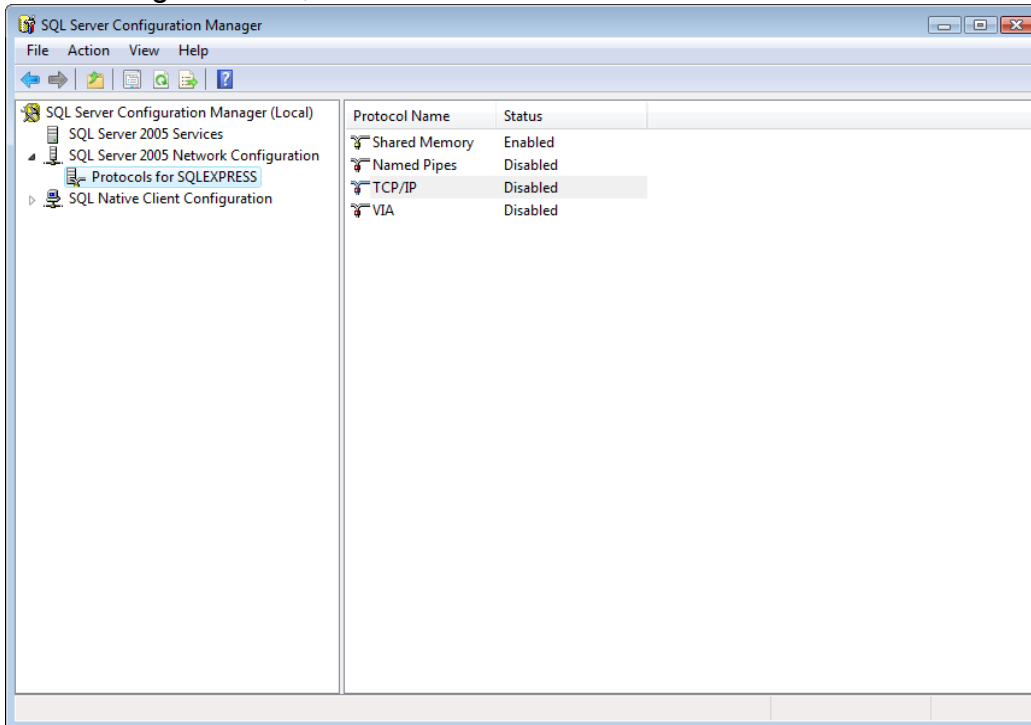
## Configuring Microsoft SQL Server 2005 Express

Before using Microsoft SQL Server 2005 Express, you need to:

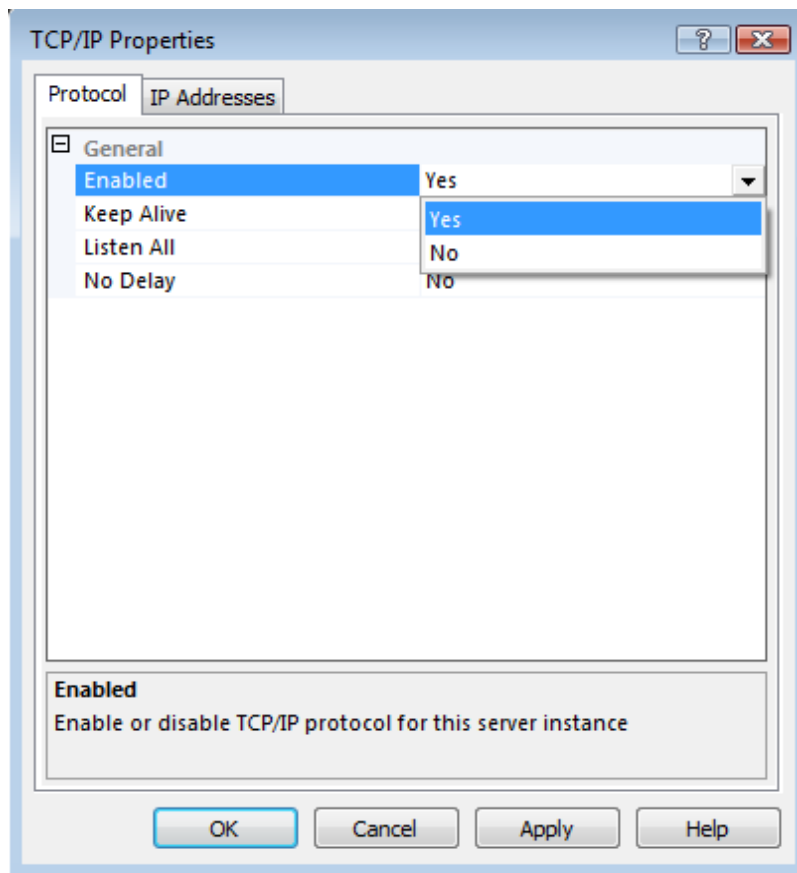
- **Configure** the database server
- **Test** database server configuration

## To configure the database server

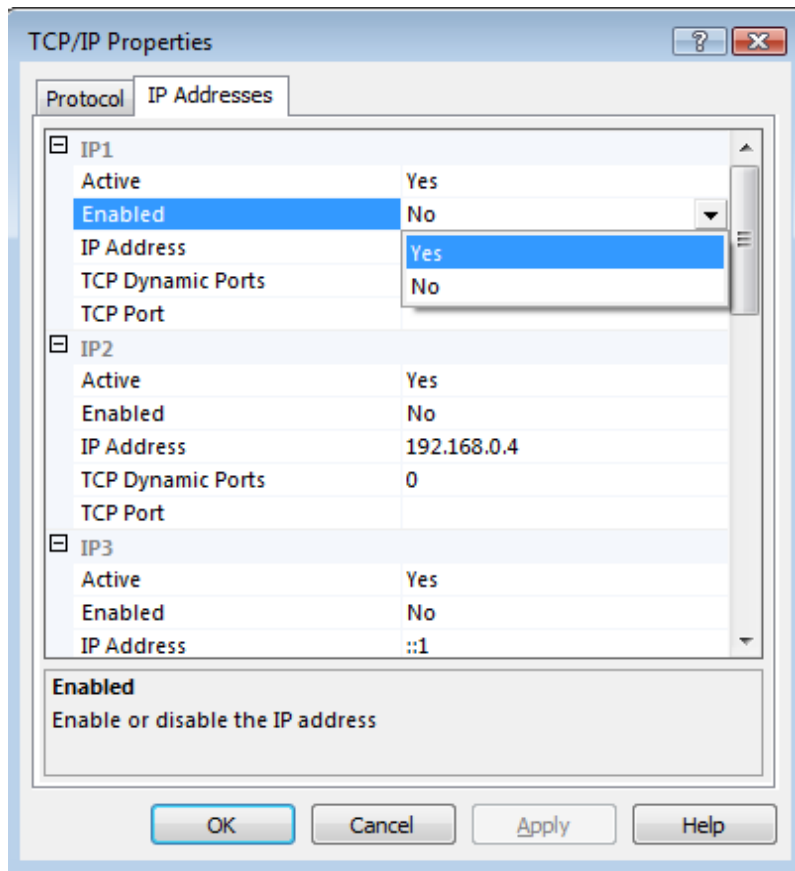
1. To run the SQL Server Configuration Manager, select **Start | Programs | Microsoft SQL Server 2005 | SQL Server Configuration Manager**.
2. In the navigation tree, select **Protocols for SQLEXPRESS**.



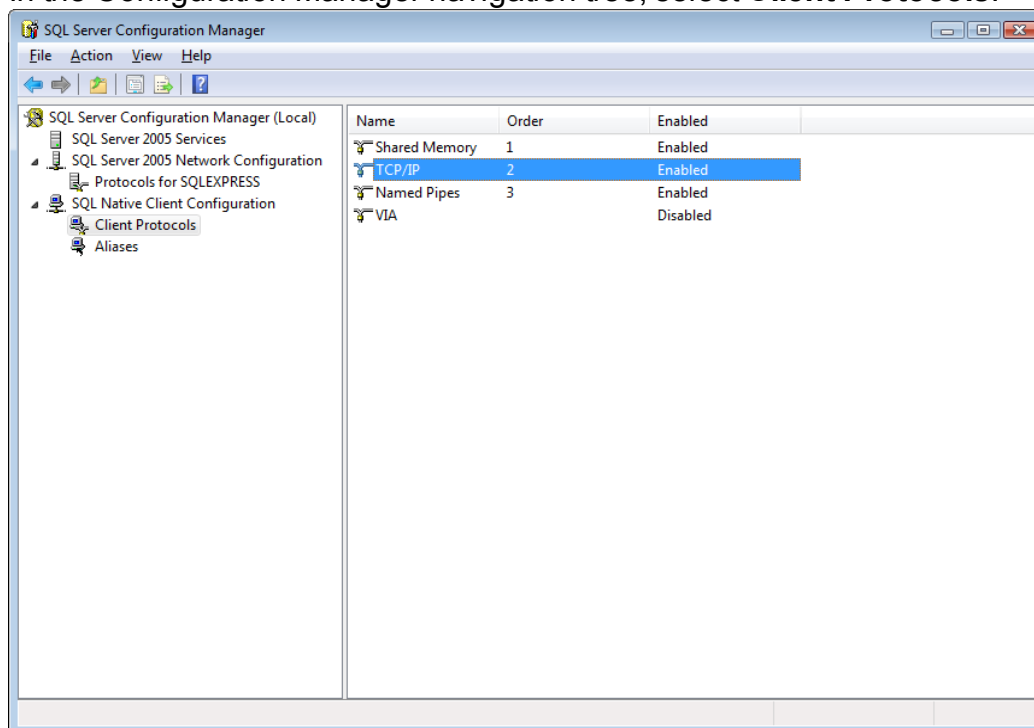
3. In the work area, double-click the the **TCP/IP** protocol. This displays the **TCP/IP Properties** window.
4. On the **Protocol** tab, select **Yes** for the **Enabled** option.



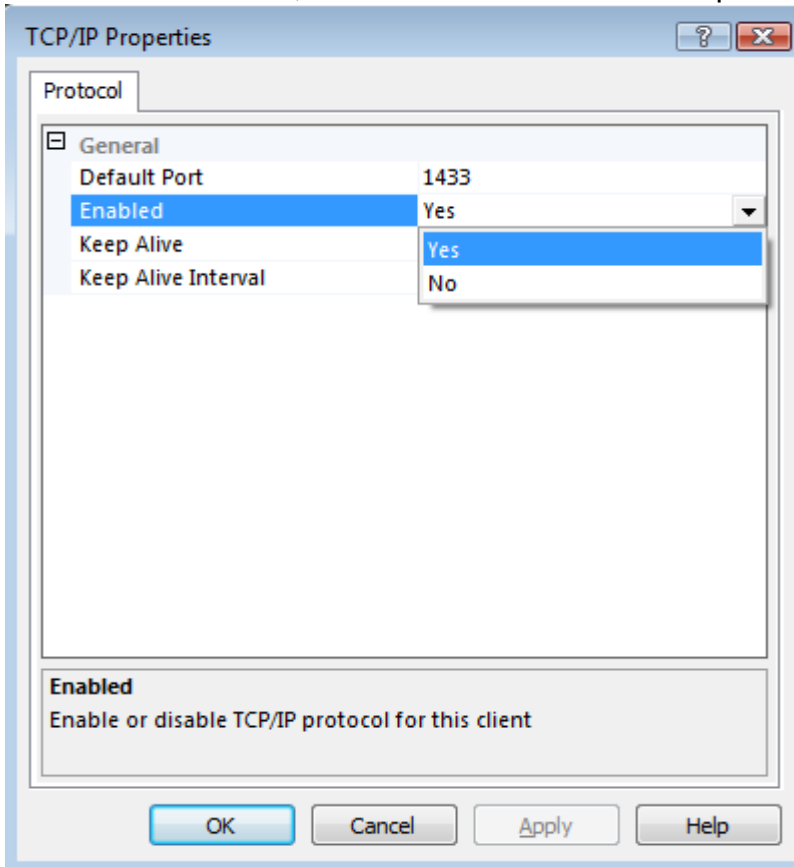
5. On the **IP Addresses** tab, select **Yes** for each **Enabled** option under each IP address.



- Click **Apply**, then click **OK** to close the **TCP/IP Properties** window.
- In the Configuration Manager navigation tree, select **Client Protocols**.

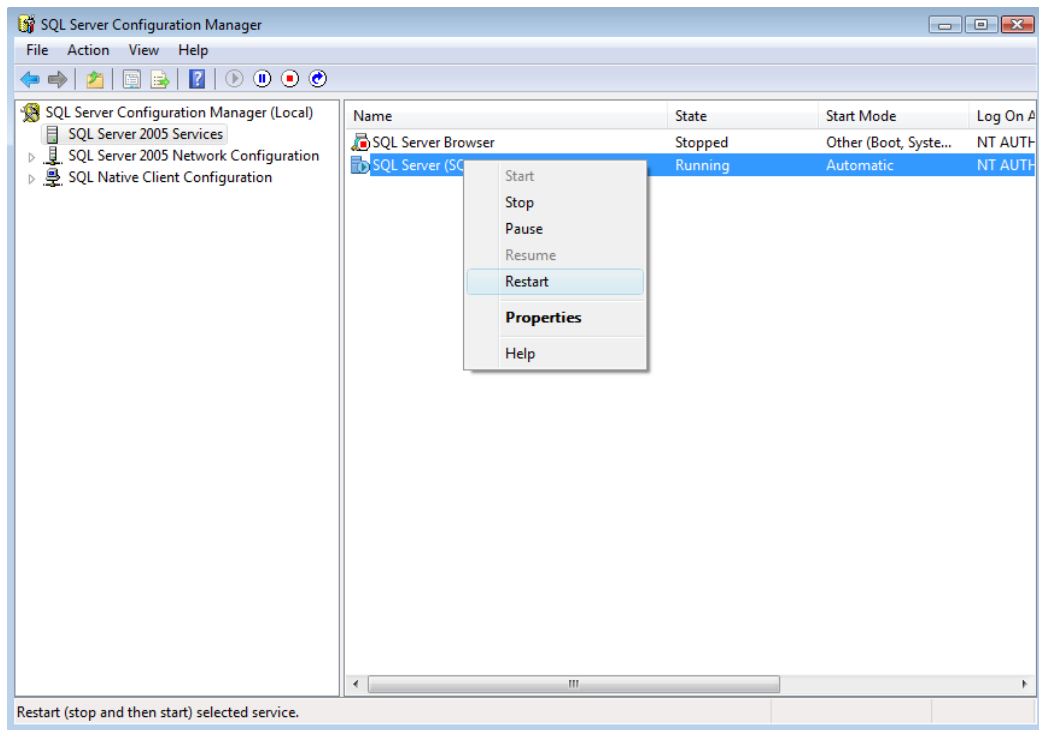


8. In the work area, double-click the **TCP/IP** protocol. This displays the **TCP/IP Properties** window.
9. On the **Protocol** tab, select **Yes** for the **Enabled** option.



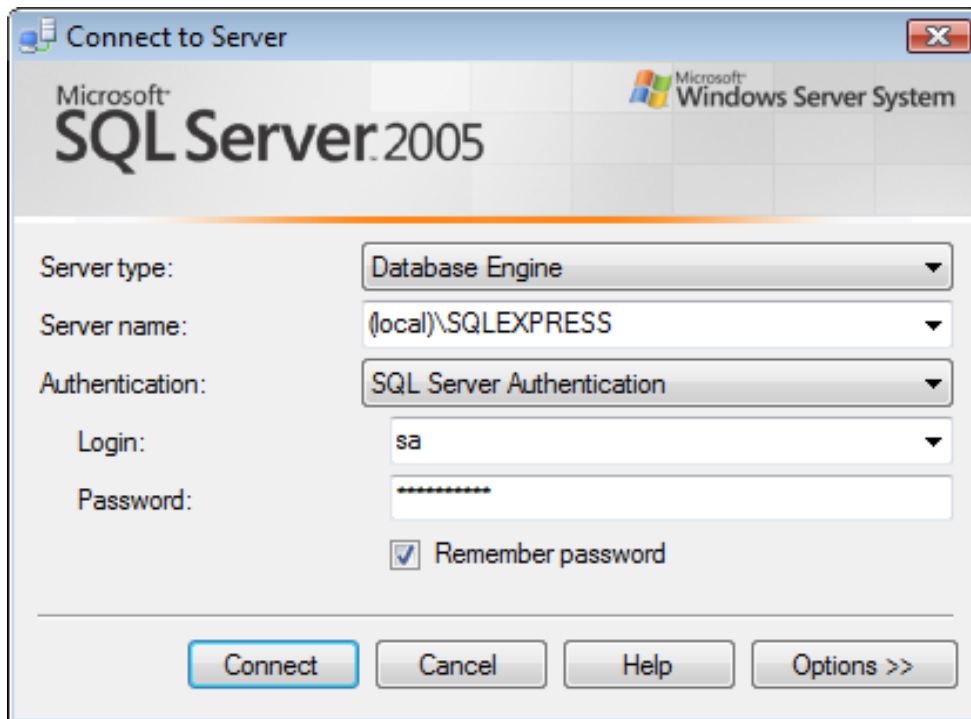
10. Click **Apply**, then click **OK** to close the **TCP/IP Properties** window.
11. In the Configuration Manager navigation tree, select **SQL Server 2005 Services**.
12. In the work area, right-click the **SQL Server (SQLEXPRESS)** service and select **Restart**. This restarts the Microsoft SQL Server service and applies the changes you have made.





## To test Microsoft SQL Server 2005 Express configuration

1. To run the SQL Server Management Studio Express, select **Start | Programs | Microsoft SQL Server 2005 | SQL Server Management Studio Express**. This opens the **Connect to Server** window.



2. Enter the following connection parameters:

Parameter	Set to
Server type	<b>Database Engine</b>
Server name	<b>(local)\SQLEXPRESS</b> <i>Server name should be specified in the following format: &lt;computer name&gt;\&lt;database instance name&gt;</i>
Authentication	<b>SQL Server Authentication</b>
Login	<b>sa</b>
Password	The password you specified for the <b>sa</b> user when See "Installing Microsoft SQL Server 2005 Express" on page 1 the Microsoft SQL Server 2005 Express.

3. Click **Connect**. If database server configuration is correct, connect will be established without errors.